

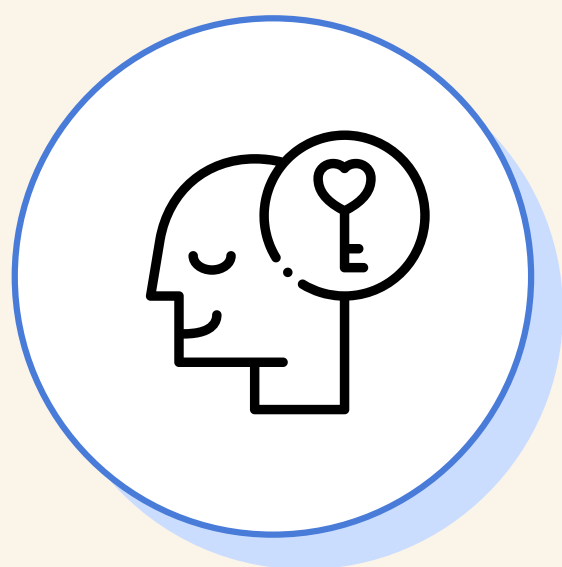
Psychosocial Hazards Conversation Starters



How is this relevant to us, our team, or our organisation?
What challenges do we currently face?
Is this an emerging or growing issue?



Are there opportunities or challenges?
What are we currently doing well as a team or organisation?



Does anyone want to share what they are doing to address the issue?
What could work well?
What would not?



What could we change or implement?
Are there any immediate actions to be taken?



What are our next steps?